




KOKO SHELL

KOKO SHELL

“WE GIVE WINGS TO YOUR BUSINESS’S SUCCESS“

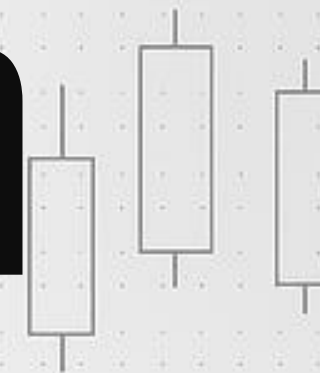
JOIN US TODAY →

 www.kokoshell.world





Introduction



We are navigating a major turning point in the economic system that demands a fundamental change in investment approaches, as conventional ideologies fail to capture the opportunities arising from this paradigm shift. Our vision for **Koko shell** is to take the firm to the next level by amplifying our knowledge across all market types, focusing not just on extending products, but on providing genuinely customized services and solutions for each client, which is the core thinking behind our mutual fund strategy.



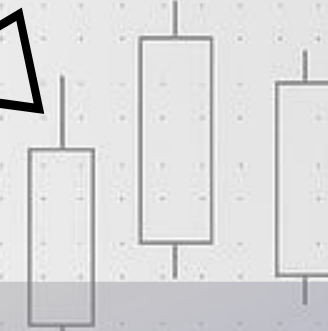
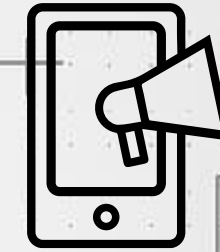
www.kokoshell.world



Company's



Mission

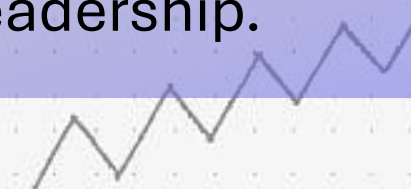


Koko shell is committed to delivering genuinely customized investment solutions tailored to every client's needs. By leveraging deep knowledge across all market types, we design adaptive strategies, innovative mutual fund models, and forward-thinking financial services. Our mission is to empower clients with clarity, confidence, and long-term value in a rapidly evolving economic landscape.

Vision



Koko shell aims to lead the new era of global finance by redefining how investments are understood and managed. As traditional systems shift, our vision is to stay ahead through insight-driven innovation, market intelligence, and personalized strategies—transforming opportunities into sustainable growth while elevating the firm to unmatched excellence and industry leadership.



Our Core Values



Our Trading Strategy



CURRENCY PAIR



GLOBAL STOCK



METALS



ENERGY



CRYPTOCURRENCY



NFT



Grow with us

Koko shell offers a seamless way to track the overall performance of forex, CFD, and crypto markets through a single, powerful index asset. Historically, index-based strategies have consistently outperformed the average managed fund. With thousands of trading scripts available, investors often face choice overload—more options create more cost, more complexity, and a greater need for guidance. **Koko shell** removes this burden entirely, delivering a simplified, efficient investment experience for every kind of investor.



www.kokoshell.world



Our Team Experts



KOKO SHELL



ADAM RIVERS
FOUNDER & CEO

Visionary leader with a passion for financial innovation. He founded Adithya Traders to simplify and democratize trading for everyone.



RICKY RONALD
CHIEF TECHNOLOGY OFFICER

Oversees the development of our platform, blending AI, blockchain, and data science to deliver powerful and intuitive trading tools.



BELLA MORGAN
COMMUNITY LEAD

Dedicated to building a supportive and knowledgeable community, curating expert insights, mentorship programs, and educational content for all users.



KIM LEE
HEAD OF STRATEGY

Leads strategic growth and global partnerships, ensuring View Chain remains agile and competitive in the dynamic world of fintech.



www.kokoshell.world

Education & Expert Advisor (Robo Trading) Charges



\$10

Monthly



Our Package



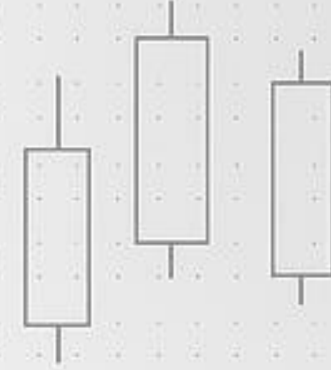
**\$50 to
\$10,000**

Direct Incomes

50%



Daily Benefit Incomes



10% to 30%
Up to 200%



www.kokoshell.world



Level Incomes



SR.NO	LEVEL	INCOME
01	Level 1	10%
02	Level 2	5%
03	Level 3	3%
04	Level 4	2%
05	Level 5	1%
06	Level 6 to Level 15	0.50%



Binary **Matching** Incomes



AGAINST

\$10



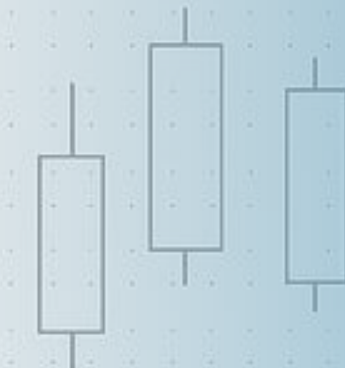
1:2 OR 2:1
UNLIMITED

FIRST
2:1 = 10%

AFTER
1:1 = 10%



Reward Incomes



SR.NO	LEFT LEG	RIGHT LEG	INCOME
01	\$1000	\$1000	\$10
02	\$10k	\$10k	\$100
03	\$25k	\$25k	\$250
04	\$50k	\$50k	\$500
05	\$100k	\$100k	\$1000
06	\$1000k	\$1000k	\$10000
07	\$10000k	\$10000k	\$100000



Terms & Conditions



- ❖ Daily Profit, Matching, and Level Income
- ❖ Capping per day
- ❖ Admin charges of 5% will be applicable
- ❖ Minimum withdrawal: \$10
- ❖ Payment Gateway: USDT BEP-20
- ❖ 1 Direct compulsory for all levels of the Investment Plan
- ❖ Profit maximum of 200% will be paid on investment in all packages. After that, a re-top-up is mandatory
- ❖ \$10 Expert Advisor Fee & Education Package monthly charge will be applicable
- ❖ Every month, \$10 Robo fees and matching income of 10% will be paid
- ❖ Koko Shell Company can change the business plan at any time without prior notification
- ❖ Two direct customers are compulsory for Binary Income



Thank You



KOKO SHELL



+123-456-7890



www.kokoshell.world



kokoshellworld@gmail.com



123 Berlin St. North –East.

